



Let **UK** Home

**3 Bedrooms**

**House**

**Located in London**

**£750,000**



[info@letukhome.co.uk](mailto:info@letukhome.co.uk)

<https://www.letukhome.co.uk/>

01795 358 886



# Collett Road London

SE16 4DJ



Let UK Home are excited to offer this stunning three-bedroom House located in London SE16.

This 3-bedroom terraced house spans ground and first floors, with a total internal area of 840 sq ft (78 sq m) and a large private rear garden. The ground floor features a generous reception room with double doors to the garden, a fitted kitchen and a downstairs WC. Upstairs holds three bedrooms of different sizes plus a full family bathroom, offering a practical split living-and-sleeping layout ideal for families.

This terraced house is located on the coveted Southwark riverside in Zone 2, just a short walk from the River Thames. The riverside promenade delivers spectacular vistas of Tower Bridge, Southwark Park and the London Bridge skyline, harmonising lush greenery with iconic urban scenery.

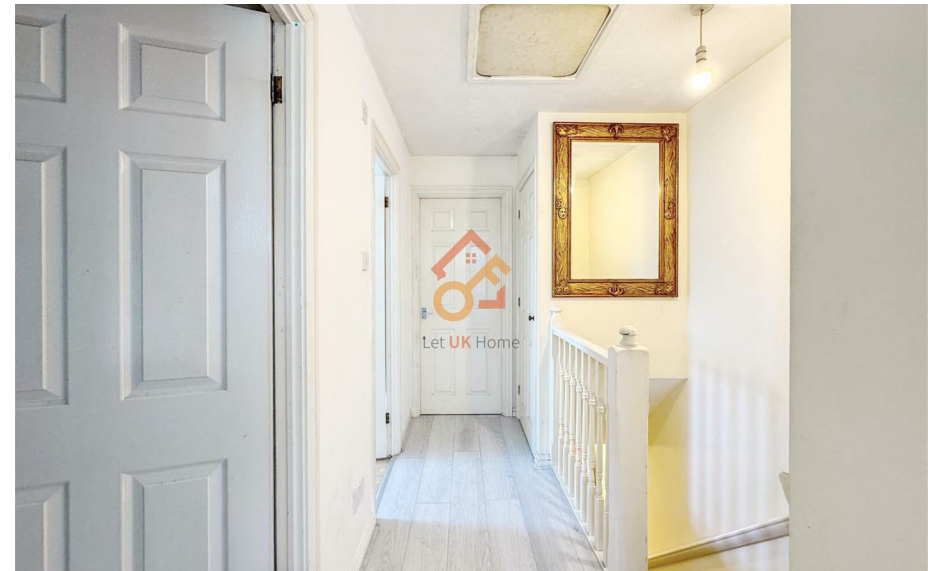
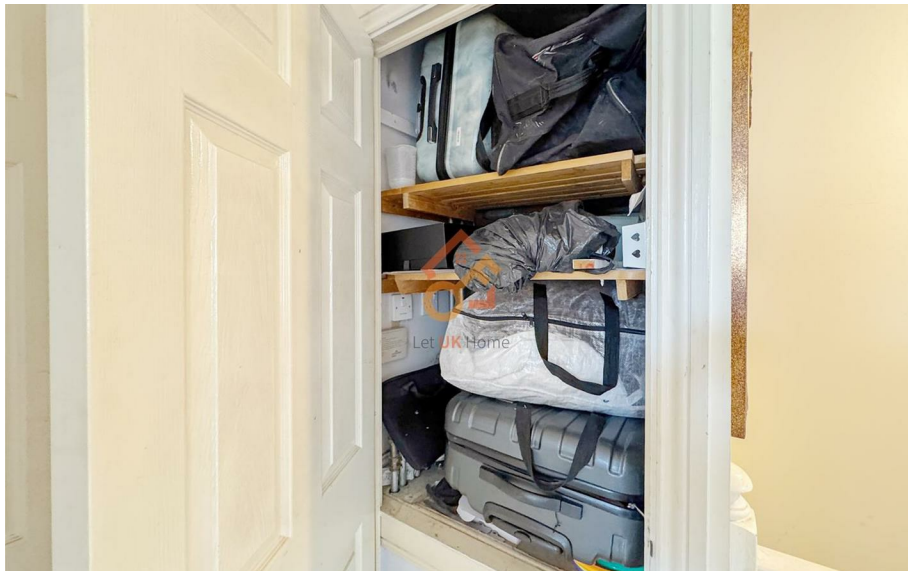
Residents benefit from an array of amenities including Tesco, Sainsbury's and an eclectic choice of international restaurants. Borough Market, Covent Garden, riverside jazz venues and local theatres are all within easy walking distance. The home features a private rear garden and dedicated off-street parking, complemented by nearby gym facilities plus free public tennis courts in Southwark Park for everyday leisure and family outings.

Bermondsey Jubilee Line station is moments away, offering direct services to Canary Wharf, Bond Street, King's Cross and Heathrow Airport. Multiple bus routes run to London Bridge transport interchange, enabling effortless travel

# Collett Road London

£750,000 Freehold

- House
- Prime Riverside Location
- Parking
- EPC Rating: C
- Walking Distance to Tube Station
- Close to Local Shops
- Private Rear Garden
- Virtual Tour Available



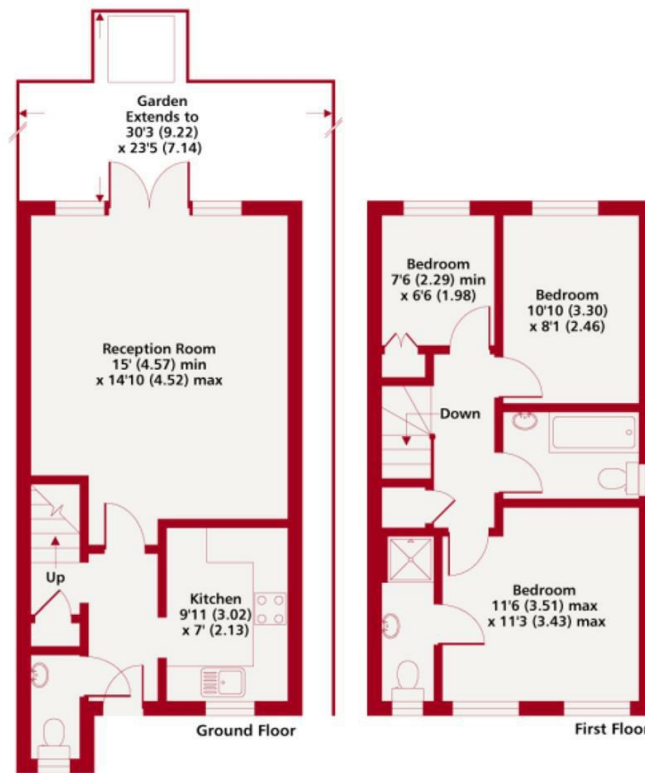


Let **UK** Home

3F 2 Eastbourne Terrace  
Paddington  
London  
W2 6LG

01795 358 886

info@letukhome.co.uk



Collett Road SE16  
Gross internal floor area 840 sq ft 78 sq metres

**Council Tax Band: E**

**Local Authority:**

Agents Note: Whilst every care has been taken to prepare these particulars, they are for guidance purposes only. All measurements are approximate and are for general guidance purposes only and whilst every care has been taken to ensure their accuracy, they should not be relied upon and potential buyers/tenants are advised to recheck the measurements.

Energy Efficiency Rating		Current	Potential
Very energy efficient - lower running costs			
(92 plus) <b>A</b>			
(81-91) <b>B</b>			
(69-80) <b>C</b>			
(55-68) <b>D</b>			
(39-54) <b>E</b>			
(21-38) <b>F</b>			
(1-20) <b>G</b>			
Not energy efficient - higher running costs			
<b>England &amp; Wales</b>		EU Directive 2002/91/EC	

Current: 72, Potential: 85

<https://www.letukhome.co.uk/>